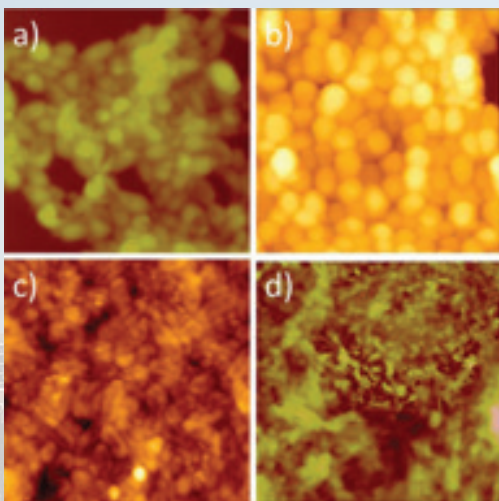




Before joining the M2A I was working as a quality analyst for Severn Trent Water at the Shrewsbury WTW. My role in this position was to process and analyse potable and raw water sources from throughout the Severn Trent territories. While this job was rewarding the technical progression was limited, it was for this reason that I chose to peruse the M2A scheme.



Following completion of my Eng.D. studies I am now working as a Research Manager for my sponsoring company Hybrisan Ltd; which was co-founded by another Eng.D. alumnus Dr. Lee Bridgeman. The M2A scheme has proven invaluable in facilitating this transition for both myself and Hybrisan Ltd. With regards to Hybrisan the M2A scheme has produced a candidate of suitable calibre to allow for the knowledge and expertise generated throughout the project to be retained. For myself, the M2A scheme offered me numerous opportunities for continued professional development hence, preparing me for both the technical and managerial aspects of the role.

The Eng.D. has improved my employment prospects exponentially due to the numerous opportunities both academically and managerially for continued professional development. Academically speaking the M2A scheme has allowed me to become a leading expert in AFM, bacterial adhesion, and the application of novel biocides; as demonstrated by my publication history and invitation to review a paper for a notable journal. Furthermore, the M2A scheme has provided me access to numerous forums on which to discuss and present my work on both local and international stages, most notably in my trip to the IBBS in Dublin wherein I gave a keynote speech on the biological applications of AFM. With regards to professional development, the M2A scheme has allowed me to develop my managerial skills, through a number of managerial modules, as well as my knowledge of IP protection and its relevance to business.

Subsequently, the M2A scheme has allowed me to progress my career to a point wherein I am perfectly suited to facilitate the transfer of my academic research from an academic environment to a commercial one.



Swansea University
Prifysgol Abertawe

EPSRC

Engineering and Physical Sciences
Research Council



EPSRC Centre for Doctoral Training in Industrial Functional Coatings



Cronfa Gymdeithasol Ewrop
European Social Fund